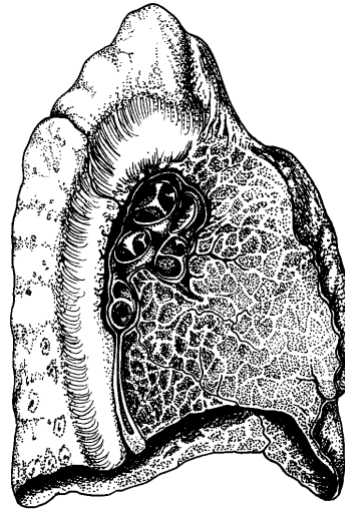
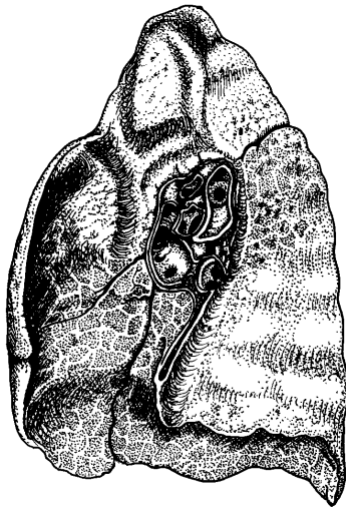
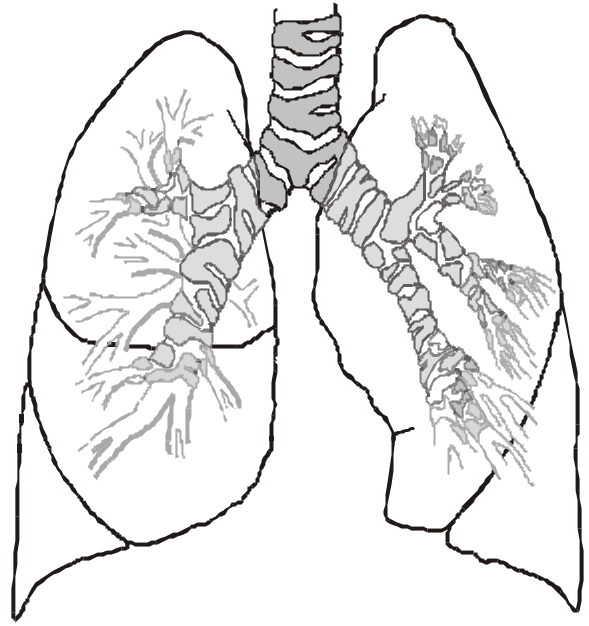
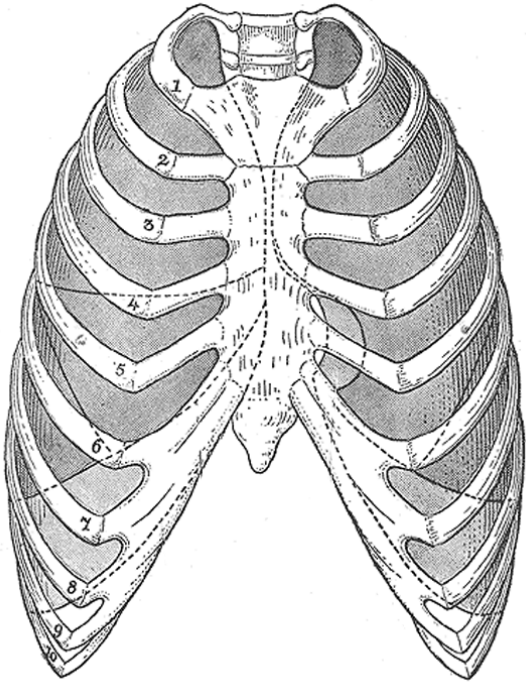


PULMONES



PRESIONES PARCIALES DE LOS GASES RESPIRATORIOS

	AIRE ATMOSFÉRICO	AIRE ALVEOLAR	SANGRE ARTERIAL	SANGRE VENOSA
O₂	159,1	101	100	40
CO₂	0,3	39	40	46
N₂	600,6	573	573	573